

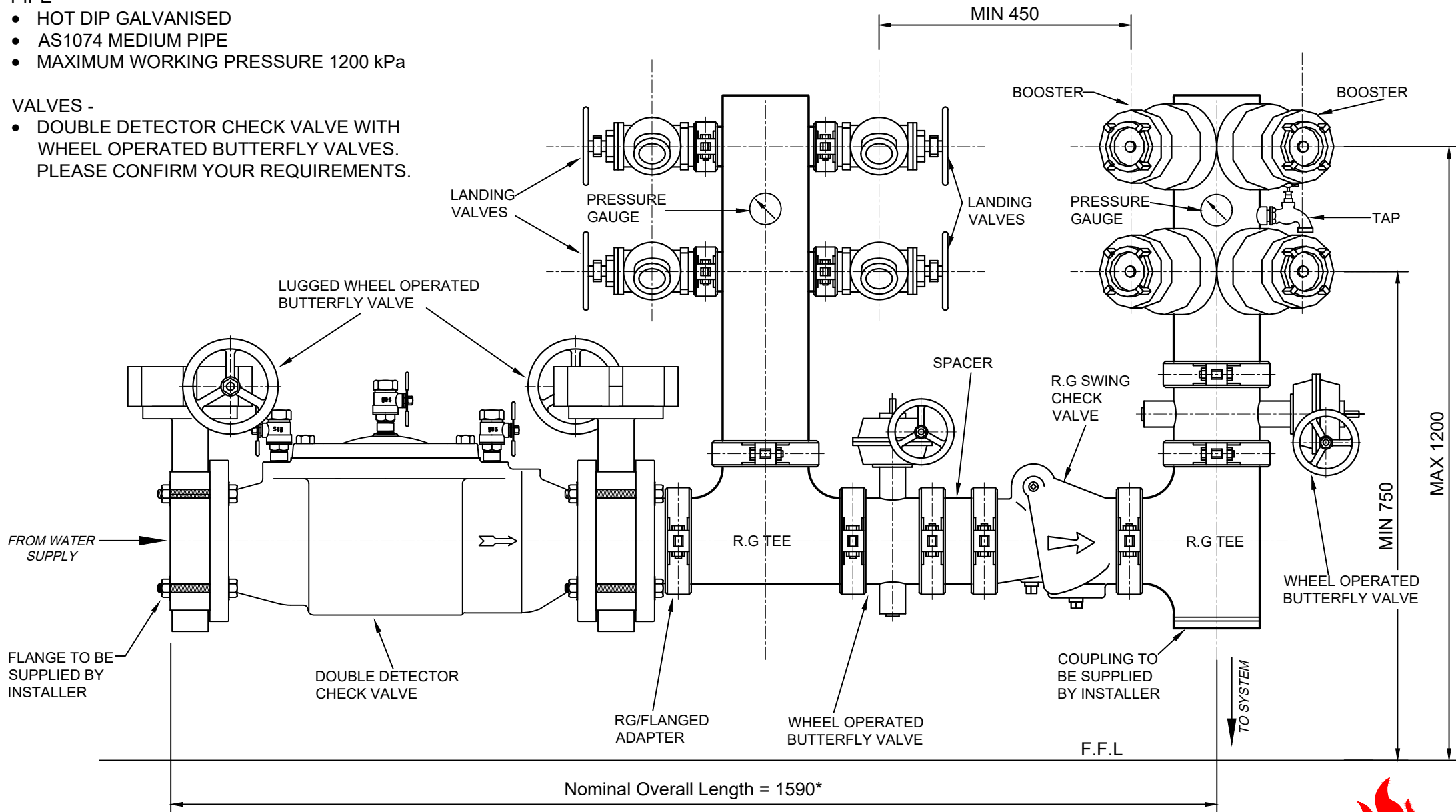
NOTES:

PIPE -

- HOT DIP GALVANISED
- AS1074 MEDIUM PIPE
- MAXIMUM WORKING PRESSURE 1200 kPa

VALVES -

- DOUBLE DETECTOR CHECK VALVE WITH WHEEL OPERATED BUTTERFLY VALVES. PLEASE CONFIRM YOUR REQUIREMENTS.



* - (Overall assembly length may vary slightly depending on individual components/equipment)

Ø150 'H' PATTERN FIRE HYDRANT BOOSTER ASSEMBLY

